



# Newcastle University

**Exchange Programme 2022/23**  
**Application Guidelines and Information**





# Contents

**2** Introduction and Key Terms

---

**3** Areas of Study

---

**4** Application Guidance

---

**7** Timeline

---

**10** English Language Requirements

---

**11** Visa Regulations

---

**12** Arrival to Newcastle

---

**14** Accommodation

---

**15** Why Newcastle?

---





# Introduction

We are delighted to be accepting exchange applications for 2022/2023.

If you choose the beautiful and historic city of Newcastle as your exchange destination, you'll have a unique opportunity to experience university life in the North East of England and to study at an award-winning Russell Group institution famous for academic excellence.

Please read through this document carefully as the information included will be useful in guiding you through the application process and preparing you for your upcoming adventure at Newcastle University.

Please contact us with any questions at [global.opportunities@ncl.ac.uk](mailto:global.opportunities@ncl.ac.uk). We look forward to receiving your application.

## Key Terms

Here are **explanations** for some of the key terms used throughout these guidelines:

### Exchange

Spending a semester or full academic year at Newcastle University as part of a degree programme in your home country. You do not pay tuition fees to study with us.

### Terra Dotta

This is our application portal where you complete and submit your application to study on exchange at Newcastle. We will send you a link to access Terra Dotta when we are ready for you to start your application.

### Academic Transcript

This is an official university document that lists the classes/modules /courses you have taken. We will ask to see a transcript from your home university as part of the application process. You will need to provide a certified English translation if your transcript is provided in another language. We will also issue you a transcript on completion of your experience here at Newcastle to document the modules you have completed.

### Module

At Newcastle University, the term 'module' simply means a class. Exchange students must study 60 Newcastle credits (30 ECTS) per semester. Please see our [Module Catalogue](#) for more information.

### Visa

A UK visa is the authorizing document that gives worldwide citizens the right to enter, stay temporarily or live in the UK. This can be a passport stamp, or a document given by a UK consulate/embassy in your country of origin.

# Areas of Study

We offer modules from the following areas of study:

## Faculty of Humanities and Social Sciences

Architecture, Planning & Landscape  
Arts and Cultures  
Business, Finance and Accounting  
Education, Communication and Language Sciences  
English Literature, Language and Linguistics  
Geography, Politics and Sociology  
History, Classics and Archaeology  
Law  
Modern Languages  
Philosophical Studies

## Faculty of Science, Agriculture and Engineering

Computing  
Engineering  
Mathematics, Statistics and Physics  
Natural and Environmental Sciences

## Faculty of Medical Sciences

Biomedical, Nutritional & Sports Sciences  
Psychology  
Pharmacy







# Application Guidance

You can start an application by clicking the link you received by email.

Please follow the instructions and be sure to submit before the relevant deadline. The online application form will ask you to provide some general information, contact details, a personal statement and you will be asked to choose the modules you would like to study at Newcastle. You may also need to submit an English language test certificate.

You will also need to upload a variety of documents, such as a valid passport and transcript. Unfortunately, we cannot accept a national ID card as an alternative to a passport. We recommend you prepare these well in advance of the application deadline.

You will receive an automated email when your online application has been submitted successfully. We aim to process applications on a rolling basis and we are grateful for your understanding if there are delays during our peak periods.

## Deadlines

Semester 1 application deadline – 30 April 2022

Semester 2 application deadline – 31 October 2022



# Application Guidance

## Module Choices

The range of modules available to you will depend on the link we have with your home university. If you are coming to Newcastle through a link with our School of Modern Languages, please read the 'School of Modern Languages' section at the end of this guide for additional information.

Before you start an application, you should check that Newcastle University can offer you the modules you need by reading our [Module Catalogue Guidance Notes](#).

It is important that you read the Module Catalogue Guidance Notes before using the module catalogue as it explains the terminology used and indicates any exclusions.

**Your programme of study at Newcastle is finalised after you arrive on campus. Whilst we do ask all students to select their preferred modules during the application process, we cannot guarantee these will be available to you when you arrive. As such, if you are accepted to study at Newcastle, our acceptance only provides an 'in principle' approval of your module choices.**

Exchange students are free to choose modules from the Faculties and Schools included within the exchange agreement between Newcastle University and their home institution. This is subject to timetabling clashes and module leader approval. The list of modules available to exchange students can be found [here](#).





# Application Guidance

## Application Decision

We aim to review applications on a **rolling basis**, and you can usually expect to hear from us **within three weeks** from submission, though there may be additional delays at peak periods.

A member of the Global Opportunities team will be the first to review your application to make sure you have provided all of the information we need. We will be in touch with you if we identify any issues.

Secondly, the School Exchange Coordinator for your subject area will review and assess your application. Our coordinators will consider your **academic background, personal statement** and **choice of modules**. For some subject areas, such as Fine Art, you may be asked to submit additional materials, such as a portfolio. We will be in touch with you if this is the case.

Most applications we receive are successful, however, we sometimes issue a 'conditional' offers. This may happen, for example, when a Coordinator would be happy to receive you as an exchange student, but would prefer you to change your module choices. We will work with you if you receive a conditional offer to make sure you understand what to do next.

Any additional documents you need for immigration purposes will be sent to you later.



# Timeline – Semester 1 Only

Here are some of the **key dates** to remember for your application and academic timeline if you are planning on studying with us for Semester 1 (Fall) only.

Students from our Non-EU partners should be aware that while ordinarily Newcastle University's Fall semester runs over Winter break and into January, we do allow non-EU partner students to return home in December and undertake 'Alternative Assessments' in order to complete their studies early. There is no requirement to stay or return to Newcastle in January to take exams because we appreciate for many students, they will be resuming studies in their home country.





# Timeline – Semester 2 Only

Here are some of the **key dates** to remember for your application and academic timeline if you are planning on studying with us for Semester 2 (Spring) only.



**31 October 2022**

## Semester 2 application deadline

The deadline for submitting your online application if you are planning to study for Semester 2 (Spring) only.



**23 – 27 January 2023**

## International Welcome Week

A short week of activities, help and support to help international students get settled into Newcastle and meet new people. These dates are provisional and will be confirmed in your acceptance letter.

**23 January 2023**



## Provisional recommended arrival date

We recommend that you arrive on the Monday or Tuesday of this week so that you can take part in the International Welcome Week. Please wait until you receive your acceptance and visa (if applicable) before making any travel plans..

**30 January 2023**



## Semester 2 classes begin

The teaching start date for Semester 2 (Spring).



**24 March 2023**

## Classes end for Spring Break

Students will have a month for travelling, socialising, relaxing and preparing for any upcoming exams.

**24 April 2023**



## Classes resume after Spring Break

Spring Break ends and classes will continue for the rest of Semester 2.



**16 June 2023**

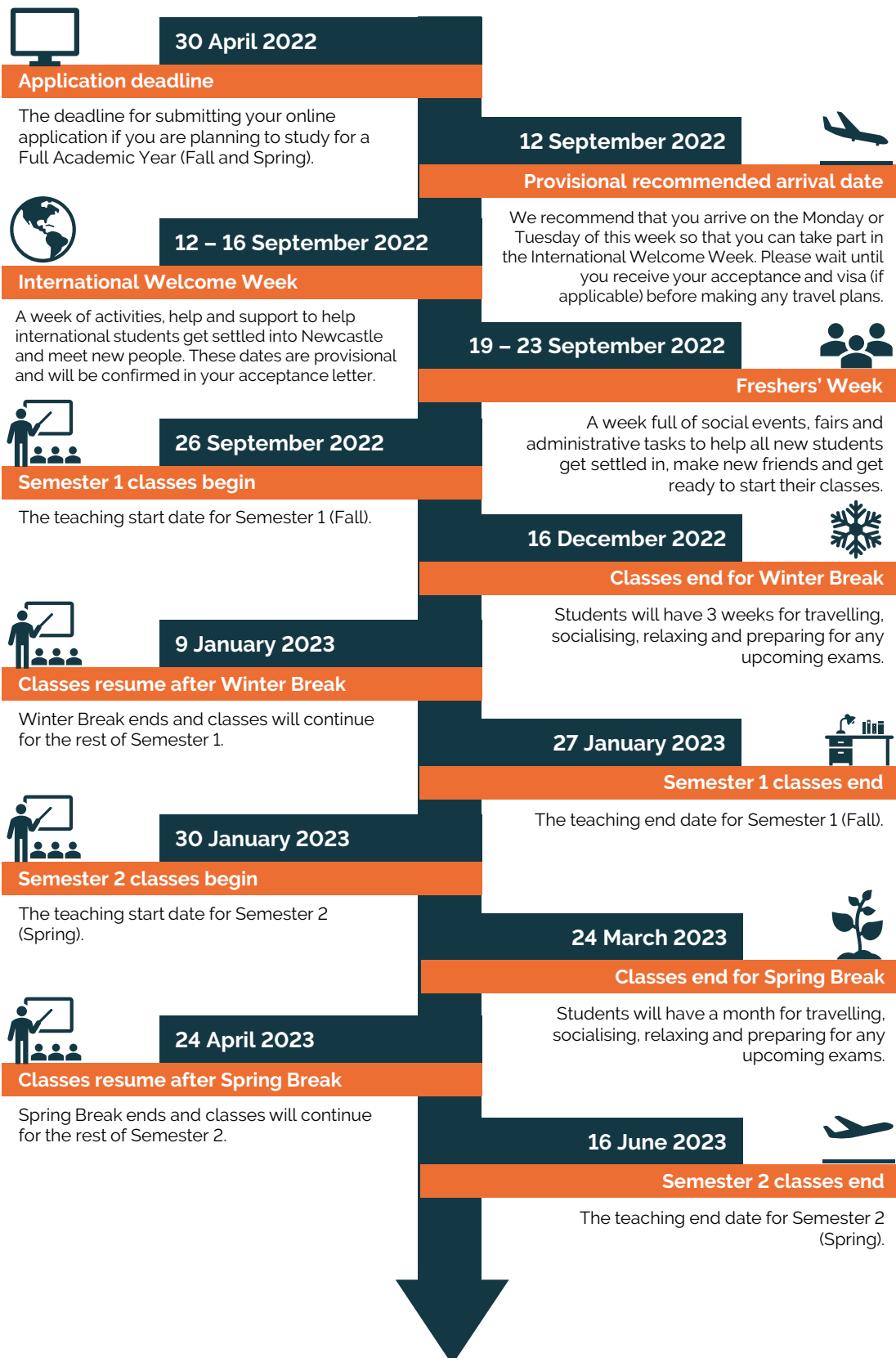
## Semester 2 classes end

The teaching end date for Semester 2 (Spring).



# Timeline – Full Year

Here are some of the **key dates** to remember for your application and academic timeline if you are planning on studying with us for a **Full Academic Year (Fall and Spring)**.





# English Language Requirements

If English is not your native language, you will need to satisfy our English language entry requirements, which will depend on your country of origin and education. Please note that our language entry requirements are **subject to review and change**.

In most cases, you will need an overall score of **IELTS 6.5 or equivalent**. If you require a **Student Visa**, you need at least **IELTS 5.5 or equivalent** in each of the four **sub-skills**:



writing



reading



speaking



listening

Each year Newcastle University has the great pleasure of welcoming students from our Japanese partner institutions. However, we are aware that our IELTS 6.5 requirement can be difficult for some students to attain. As we would like to encourage more students from our Japanese partners to study at Newcastle University, our School of Modern Languages has put together a new option allowing exchange students with IELTS 6.0 (5.5 in each subsection) to attend.

For more information, please see the **Entry for Japanese Exchange students with IELTS 6.0** page at the end of these guidelines.

Examples of other English language qualifications that we accept include **PTE62** (or 51 in all four components of test with a Student Visa) or a **TOEFL IBT score of 90** (or Reading: 18, Writing: 17, Listening: 17, Speaking: 20 with a Student Visa).

The English test must have been taken within **2 years** of the course start date. If you have taken or are planning to take an English test that does not appear on our list, you can contact [global.opportunities@ncl.ac.uk](mailto:global.opportunities@ncl.ac.uk) to check if we will accept it.

If there are different requirements based on your country of origin or education, we will contact you separately to confirm these details.

More information about our English language requirements can be found [here](#).

## English Language Courses

We offer [free English lessons](#) throughout the year – you can attend classes, workshops and interactive lectures to help with your English language skills. You can also take a [pre-sessional English course](#), costing £3,130 for 6 weeks or £5,190 for 10 weeks in the summer before you start your studies.



# Visa Regulations

## Applying for a Visa

The Global Opportunities team at Newcastle University will issue students with the **necessary documents** required to enter the UK as a student, but it is your **responsibility** to check if you need to apply for a visa before you travel.

If you are coming to Newcastle to study for one semester only, you may need to apply for a **Standard Visitor visa** before you travel to the UK. Most international students coming to Newcastle to study for one academic year will require a **Student visa**. Please check [here](#) to see if you need a visa. You should carefully check what you need and research the **cost, requirements** and **timescales**.

Immigration advice is also available from:

[UKCISA](#)  
[Newcastle University Visa Support](#)

If your application to study with us is successful, the Global Opportunities will send you an **acceptance letter** that you will use to apply for a visa.

## Right to Work

You may or may not have the right to work in the UK as a student and this will depend on your **immigration status**. If you need additional guidance on UK immigration, please see:

[www.ncl.ac.uk/international/visa](http://www.ncl.ac.uk/international/visa)  
[www.ukcisa.org.uk/Information--Advice](http://www.ukcisa.org.uk/Information--Advice)





# Arrival Dates

The COVID-19 situation continues to have a serious impact on international and domestic travel. Although we are planning to welcome students as normal in 2022/23, it is possible there will be changes to our academic calendar and arrival arrangements.

For students joining us in September there are two weeks of **welcome activities** for you to get involved with before classes start. For students joining us in January there is a single week of activities prior to starting class.

We recommend students arrive into Newcastle on either the **Monday or Tuesday** of International Welcome Week:

Semester 1 (Fall): Monday, 12 September – Friday, 16 September 2022

Semester 2 (Spring) : Monday, 23 January – Friday, 27 January 2023

We recommend you wait until you have been accepted by Newcastle and have your visa – if relevant – before making any travel arrangements.



## International Welcome Week

Our International Welcome Week programme has been designed to support new international students as they adjust to their new life in Newcastle. International Welcome Week runs in **September for Semester 1** students and in **January for Semester 2 students**. For those flying in to Newcastle Airport during designated times, staff will be there to offer a warm welcome and to provide transport to your accommodation.

During International Welcome Week there will be:

- Talks to help prepare you for your upcoming studies.
- Sessions to introduce you to the local area and surrounding region.
- Opportunities to socialise and meet new students.
- Fun activities and events to keep you busy while you settle in.
- Invitation to connect with your university 'buddy' through a peer support scheme we organise.
- Workshops where you will officially register for modules/classes.

Click [here](#) for a dedicated website that is updated before the start of each new semester with information for new students.

# Arrival to Newcastle

Our nearest airport is **Newcastle International Airport** (15 minutes by car to campus, 20 minutes by Metro to Campus).

Our nearest train station is **Newcastle Central** (5 minutes by car to campus, 5 minutes by Metro to Campus).

If you arrive within the designated times during International Welcome Week, Newcastle University staff will be waiting for you at the **airport arrivals lounge** and will help **transport** you to your accommodation. More information on how to take advantage of this service will be provided to you in the pre-departure period.

If you arrive outside of these times or into the train station or another UK airport, you must organise transportation to your accommodation **independently**. Please try to plan this ahead of your arrival and seek advice from the [Global Opportunities](#) if you need it.

Please click [here](#) to find out more information about **methods** of getting to Newcastle from other UK airports





# Accommodation

Applicants who wish to live in University accommodation can apply **online** but only after they have been offered a place of study at Newcastle University. This will be in **Summer** for students arriving in **September** and in **Autumn** for students arriving in **January**. We have a wealth of accommodation options in Newcastle, varying in price, style and location.

Please be aware that accommodation for a single semester is extremely limited and we cannot guarantee that students will be housed in University accommodation. Single semester students who are offered a place in University accommodation will be informed of their offer in early September.

If you are not allocated a place in University accommodation, the Accommodation Team will provide information and guidance on how to look for accommodation in the private sector.

Student rooms are designed for **single occupancy living** and offer a private place to sleep and study. Some rooms have en-suite bathrooms but if not, you'll share a bathroom with approximately 4-6 other students in your 'flat'. You will also share a communal space and kitchen area with your new 'flatmates'. Heating, lighting, water and an internet connection are included as standard.

[www.ncl.ac.uk/accommodation/university](http://www.ncl.ac.uk/accommodation/university)



# Why Newcastle?

## A Cultural City

Newcastle offers a **diverse** cultural scene, **architectural** beauty, **history** and a world-famous **nightlife**. The city has excellent **transport** links and **London** is only a 3-hour journey away by train. From the city centre, it is only a short bus or train ride to the **countryside**, where you can explore the area's breath-taking scenery and **coastline**.

## A Sporting City

This city is not only home to **Newcastle United Football Club** and St. James' Park, but also the Falcons and Eagles; top-tier **rugby** and **basketball** teams. Newcastle University is also one of the UK's top universities for sport, offering fantastic **facilities** and a range of **athletics clubs**. Find out more [here](#).

## A Student City

Newcastle is ranked as one of the **UK's top student cities**, offering a range of **culture** and **entertainment**. Newcastle University has been rated **7th** in the UK for overall **student experience** and **4th** in the UK for **social life** (The Times Higher Education Student Experience Survey 2018), reflecting our high levels of **student satisfaction**.





# School of Modern Languages

## General Guidance

Students from institutions whose partnership is with the School of Modern Languages at Newcastle University must follow stipulated regulations as to what subjects they can choose to study and how many credits they can study in each subject.

Each student must study 60 credits per semester (thus 120 credits for a full academic year). You may be able to take those modules in the School of Modern Languages.

Alternatively, students registered for a full year can choose up to a maximum of 40 credits in the following Schools/Departments (with a maximum of 120 credits in total):

- Department of Fine Art (Art History modules only)
- Department of Media, Culture, Heritage
- Department of Music (Music Theory/History modules only)
- Department of Planning
- School of English Literature, Politics and Sociology
- School of Philosophy
- Newcastle Business School

Students must attend all lectures/ seminars/ laboratory workshops of their chosen modules. University timetables are fully finalized only after the registration period; therefore, applicants need to be aware timetable clashes (where classes for one chosen module may be delivered at the same time as those of another chosen module) may occur. If a clash does occur, then students need to be aware that they will have to choose a different selection of modules. It is advisable that students have a list of first choice and second choice modules they would like to study in case they encounter a timetable clash. The more schools from which modules are chosen, the more likely there will be timetable clashes.

Students must sit the University English Language Assessment (UELA) as part of their registration process. It is a compulsory part of the registration process for non-native speakers of English. Following this assessment, students will be informed if it is recommended they take one of the In-Sessional English Language courses.

## Studying Modules in the School of English Literature, Language and Linguistics (SELLL)

Students wishing to study English Literature modules in SELLL must take a 'Streaming Exercise' prior to their arrival in Newcastle. This exercise helps to identify whether an individual has sufficient experience to take Literature modules and if so, which level they should study it at. As part of the Streaming Exercise, students are required to submit a short essay in response to a literary extract.

For more information about the Streaming Exercise, please contact [Global Opportunities](#).