

学部留学生
院生留学生、研究生、交流学生用
新入生オリエンテーション

International Student Orientation and Registration Program Overview

for undergraduate, postgraduate, research,
and exchange students

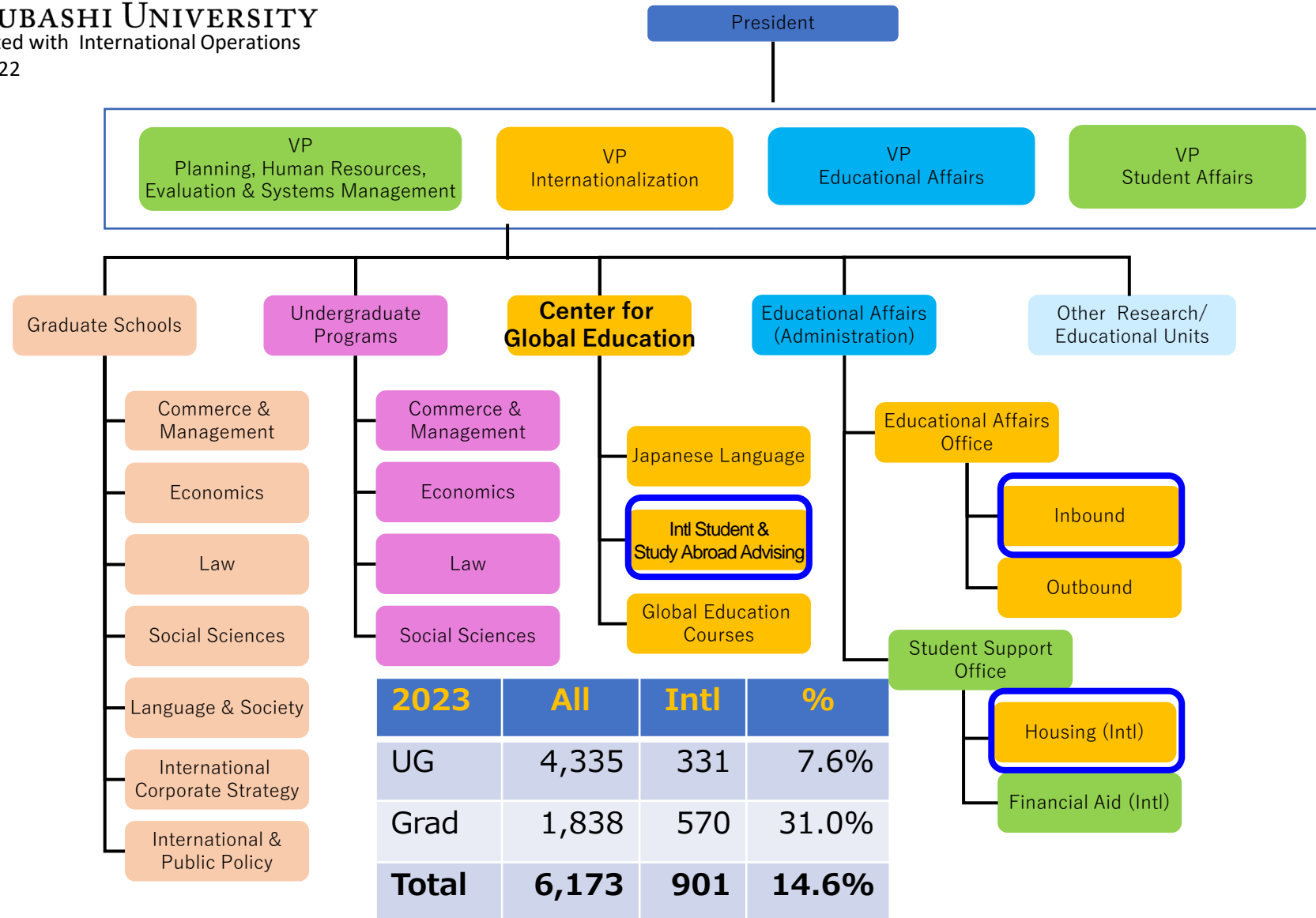
March 27, 2024

Center for Global Education & Exchange
Hitotsubashi University

International units within HU



HITOTSUBASHI UNIVERSITY
Units associated with International Operations
(abridged) 2022



学生証をお渡しします Student ID cards will be handed out

学部生 Undergraduate Students

○私費留学生 (Privately Financed)

○国費留学生 (MEXT)

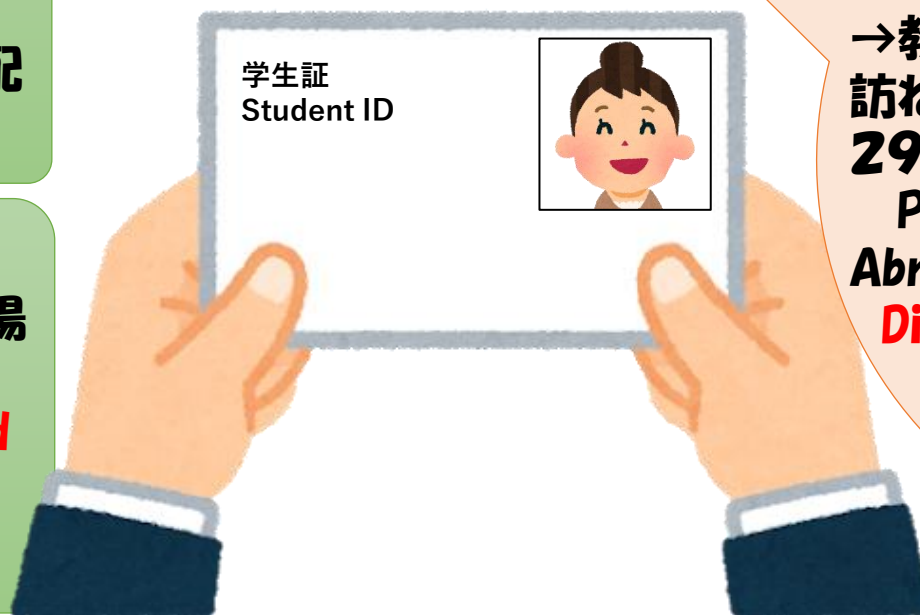
→ Handed out at New Student Interview by Class **on April 2**

4月2日新入生クラス別面接にて配布します

大学院生 Postgraduate Students

→各大学院事務室が指定した日時、場所にてお受け取りください

Please pick it up **at the date and time and location specified by each graduate school office.**



交流学生

Exchange Students (UG, PG)

→教務課留学支援係(受入担当)をお訪ねください。配布期間 **3月26日～29日**

Please pick it up at the Study Abroad Section (Inbound)

Distribution Period:

**From March 26
to March 29**

CELS、manabaシステムのログインに必要なユーザーID・パスワード通知書もこのときお渡しします。

User ID and password notification for CELS and manaba system will also be given at this time.

Gmail / Google Classroomの名前の変更方法

How to change your name on Gmail / Google Classroom

- Step 1** Go to the website: <https://portal.auth.hit-u.ac.jp/>
- Step 2** Log in with your student ID and password
- Step 3** Change your name on the “Personal Information” tab of the “Profile Maintenance” page and press the “SAVE” button

A screenshot of the 'User Profile Maintenance' page on the Hitotsubashi University portal. The page has a header with the university logo and the title 'User Profile Maintenance'. On the left sidebar, there are two links: 'Change Password' and 'Profile Maintenance', with the latter circled in red. The main content area is titled 'Profile Maintenance' and contains a tab labeled 'Personal Information', also circled in red. Below this tab are four input fields: 'Last name' (with '(英字姓)' to its right), 'First name' (with '(英字名)' to its right), 'Full name' (with '(英字姓名)' to its right), and 'Kanji name' (with '(漢字姓名)' to its right). At the bottom of the form are two buttons: a blue 'SAVE' button and a grey 'RESET' button. A hand cursor icon is pointing at the 'SAVE' button.

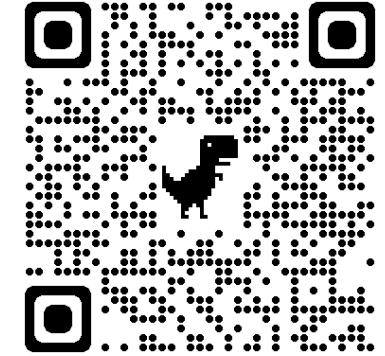
ATTENTION !!

ユーザーID・パスワードを受け取ったら、ウェブサイトで名前を確認してください。

Check your name on the website once you received your user ID and password.

外国人留学生登録をしよう！ Register as an international student

<https://hrs.ad.hit-u.ac.jp/v33/entries/add/692>



登録期限 **4月30日**
Registration deadline
April 30

必須
Mandatory

ISSAAO staff members

https://international.hit-u.ac.jp/en/cgee/advising/about_advising_office/



Advising Office

OPEN

Mon ~ Fri

10:15 - 13:15 (Walk-in)

14:30 - 17:15 (Online advising by appointment only)

CLOSED

Weekends, Holidays




Location

LS/CGE Bldg 2F on East Campus

TEL: 042-580-8168

Advisors


View updated walk-in advising schedule [here](#) .



Jin Abe 

Associate Professor
Director, Center for
Global Education and
Exchange



Hanae Tsukada 

International Student
Advisor, Center for
Global Education and
Exchange



Yuko Naya

Student Support Office



miwako miyamae

Educational Affairs
Division

Office location

Kunitachi Station



Kunitachi St.

Dalgaku Dori

Yaho St.

West

East



Guesthouse Kunitachi

