

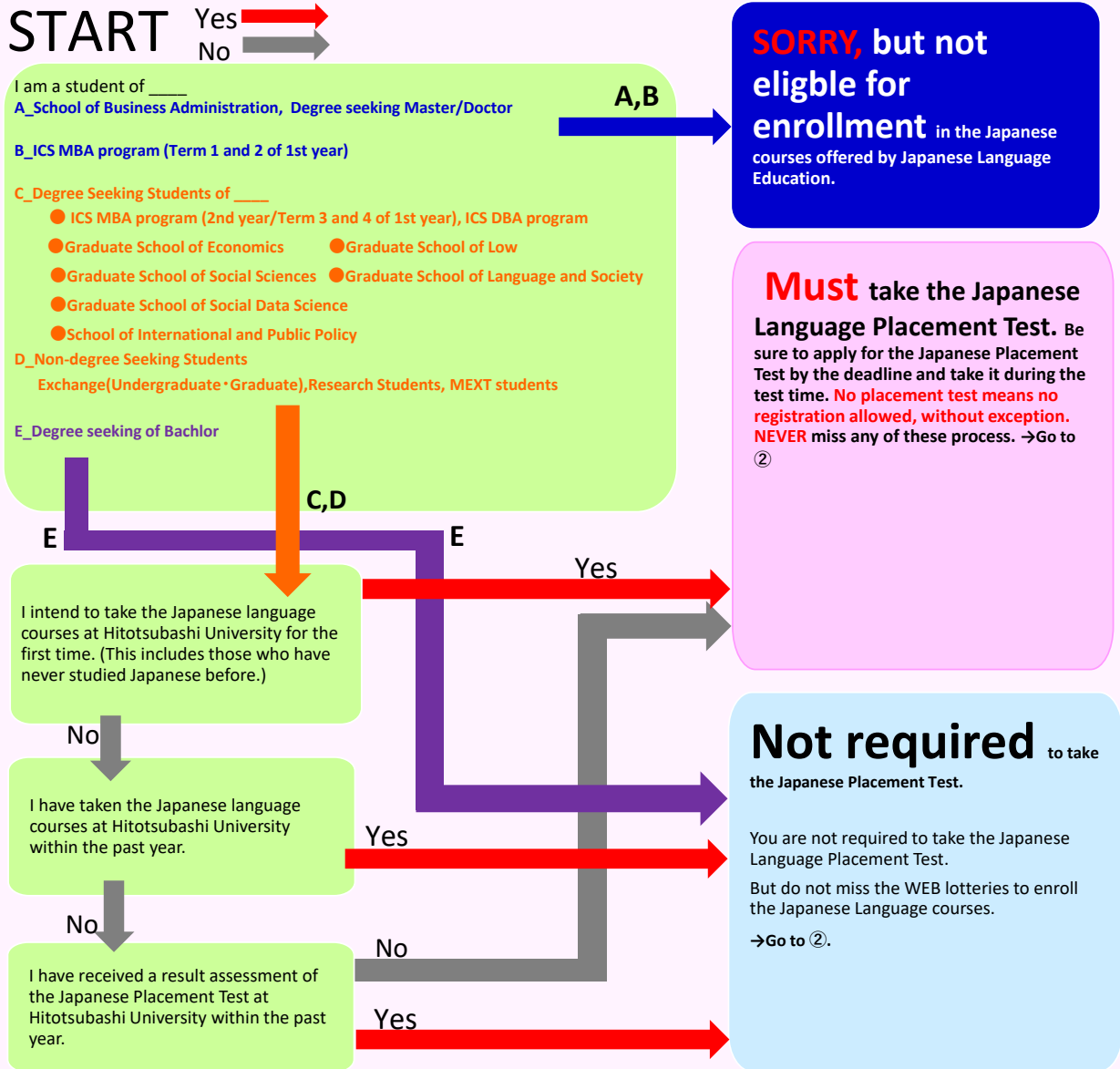


Registration Steps

Please follow the steps from ① to ③ below to register for the Japanese language courses.

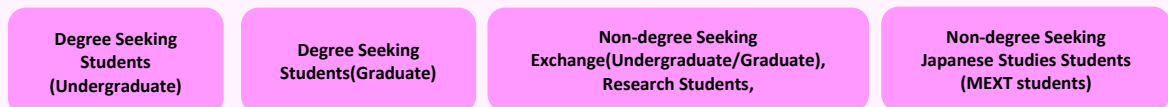
① Review this flowchart.

Review the flowchart below whether you are eligible to take the Japanese language courses offered by Hitotsubashi University Japanese Language Education Program and whether you are required to take the Japanese Language Placement Test.



② Confirm courses eligible for enrollment.

Please confirm which courses you are eligible to take since they vary depending on your student status.



You can take the courses displayed by the buttons above that are at the level of your most recent Japanese placement test result or at the next level after the one you have already mastered.

For degree seeking students at graduate school of social sciences: Please note that you cannot take more than 8 credits of Japanese language courses during your enrollment in a master's or doctoral program in the graduate school.

③ Apply for the WEB Lotteries

You must apply for registration during the WEB lotteries period for courses.

But for courses provided by graduate schools, you must register those courses during registration term.

No recourse for those who missed the WEB lotteries and registration.