



Newcastle University

Incoming Exchange 2025/26

Application Guidelines and Information



Contents

2 Introduction and Key Terms

3 Areas of Study

4 Application Guidance

7 Timeline

10 English Language Requirements

11 Visa Regulations

12 Arrival in Newcastle

14 Accommodation

15 Why Newcastle?





Introduction

We are delighted to be accepting exchange applications for 2025/2026.

If you choose the beautiful and historic city of Newcastle as your exchange destination, you'll have a unique opportunity to experience university life in the North East of England and to study at an award-winning Russell Group institution famous for academic excellence.

Please read through this document carefully as the information included will be useful in guiding you through the application process and preparing you for your upcoming adventure at Newcastle University.

Please contact us with any questions at global.opportunities@ncl.ac.uk. We look forward to receiving your application.

Key Terms

Here are **explanations** for some of the key terms used throughout these guidelines:

Exchange

Spending a semester or full academic year at Newcastle University as part of a degree programme in your home country. You do not pay tuition fees to study with us.

Terra Dotta

This is our application portal where you complete and submit your application to study on exchange at Newcastle. We will send you a link to access Terra Dotta when we are ready for you to start your application.

Academic Transcript

This is an official university document that lists the classes/modules/courses you have taken. We will ask to see a transcript from your home university as part of the application process. You will need to provide a certified English translation if your transcript is provided in another language. We will also issue you a transcript on completion of your experience here at Newcastle to document the modules you have completed.

Module

At Newcastle University, the term 'module' simply means a course. Exchange students must study 60 Newcastle credits (30 ECTS) per semester. Please see our [Module Catalogue](#) for more information.

Visa

A UK visa is the authorizing document that gives worldwide citizens the right to enter, stay temporarily, or live in the UK. This can be a passport stamp, a document given by a UK consulate/embassy in your country of origin or an electronic authorisation.

Areas of Study

We offer modules from the below areas of study, however, you will only be able to choose modules from subjects that are listed in the exchange agreement that we have with your home university. Please make sure you are clear about which subjects these are to avoid disappointment when trying to apply for subjects you're not eligible for.

Faculty of Humanities and Social Sciences

Architecture, Planning and Landscape
Arts and Cultures
Business, Finance and Accounting
Education, Communication and Language Sciences
English Literature, Language and Linguistics
Geography, Politics and Sociology
History, Classics and Archaeology
Law
Modern Languages
Philosophy

Faculty of Science, Agriculture and Engineering

Computing
Engineering
Mathematics, Statistics and Physics
Natural and Environmental Sciences

Faculty of Medical Sciences

Biomedical, Nutritional and Sports Sciences
Psychology





Application Guidance

You can start an application by clicking the link you will receive by email.

Please follow the instructions and be sure to submit before the relevant deadline. The online application form will ask you to provide some general information, contact details, and a personal statement. You will also be asked to choose the modules you would like to study at Newcastle and may need to submit an English language test certificate.

You will also need to upload a variety of documents, such as a valid passport and transcript. Unfortunately, we cannot accept a national ID card as an alternative to a passport. We recommend you prepare these well in advance of the application deadline.

You will receive an automated email when your online application has been submitted successfully. We aim to process applications on a rolling basis and we are grateful for your understanding if there are delays during our peak periods.

Deadlines

Full-year application deadline – 30 April 2025

Semester 1 application deadline – 30 April 2025

Semester 2 application deadline – 31 October 2025



Application Guidance

Module Choices

The range of modules available to you will depend on the agreement we have with your home university.

Before you start an application, you should check that Newcastle University can offer you the modules you need by reading our [Module Catalogue Guidance Notes](#).

It is important that you read the Module Catalogue Guidance Notes before using the module catalogue as it explains the terminology used and indicates any exclusions.

Your programme of study at Newcastle is finalised after you arrive on campus. Whilst we do ask all students to select their preferred modules during the application process, we cannot guarantee these will be available to you when you arrive. If you are accepted to study at Newcastle, the acceptance only provides an 'in principle' approval of your module choices.

Exchange students are free to choose modules from the Faculties and Schools included in the exchange agreement between Newcastle University and their home institution. This is subject to timetabling clashes and module leader approval. The list of modules available to exchange students can be in our [Module Catalogue](#).



Application Guidance

Application Decision

We aim to review applications on a **rolling basis**, and you can usually expect to hear from us **within three weeks** from submission, though there may be additional delays at peak periods.

A member of the Global Opportunities team will be the first to review your application to make sure you have provided all the information we need. We will be in touch with you if we identify any issues.

Secondly, the School Exchange Coordinator for your subject area will review and assess your application. Our coordinators will consider your **academic background, personal statement, and choice of modules**. For some subject areas, such as Fine Art, you may be asked to submit additional materials, such as a portfolio. We will be in touch with you if this is the case.

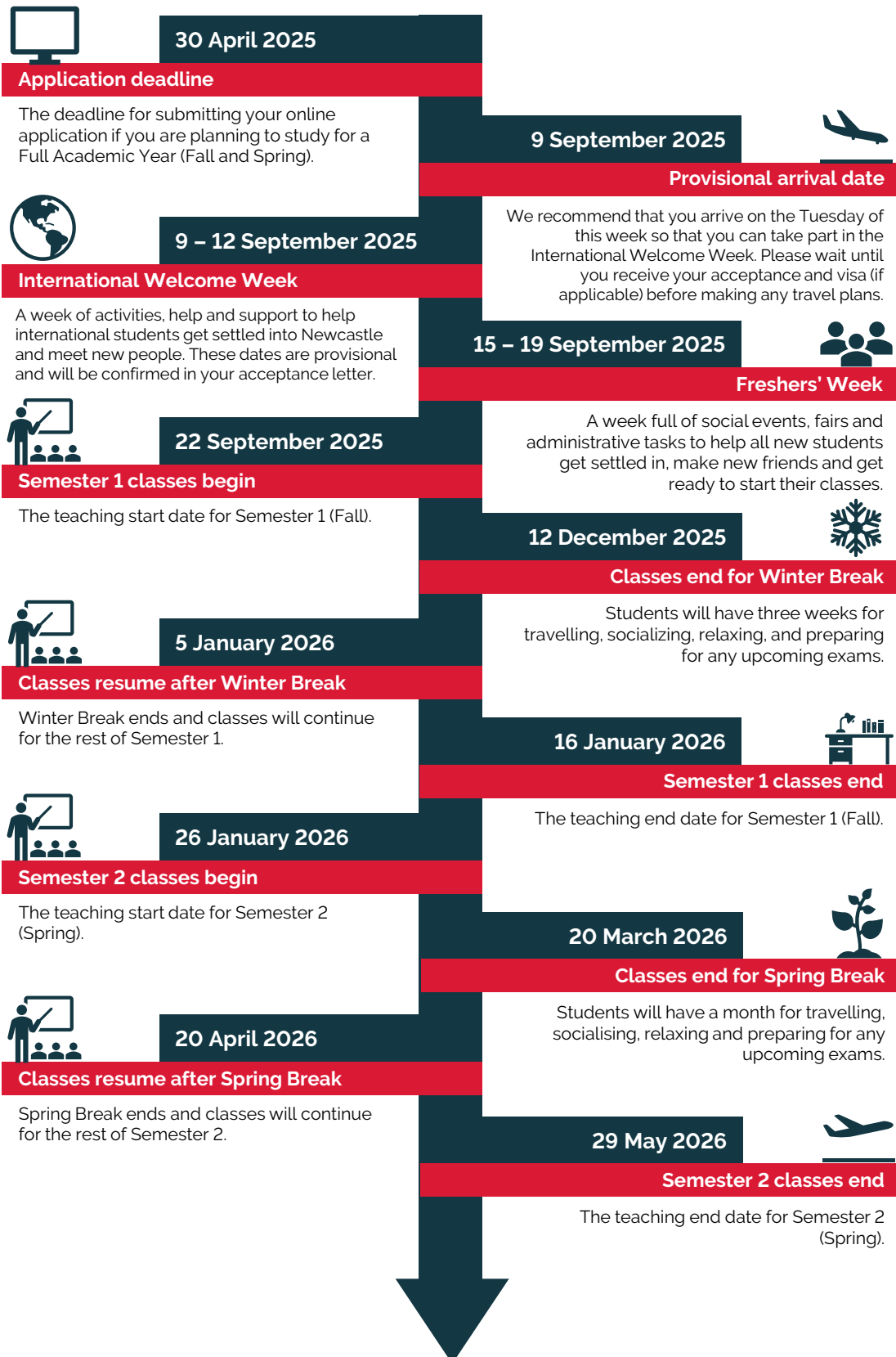
Most applications we receive are successful, however, we sometimes issue 'conditional' offers. This may happen, for example, when a Coordinator would be happy to receive you as an exchange student, but would prefer you to change your module choices. We will work with you if you receive a conditional offer to make sure you understand what to do next.

Any additional documents you need for immigration purposes will be sent to you later.



Timeline – Full Year

Here are some of the **key dates** to remember for your application and academic timeline if you are planning on studying with us for a **Full Academic Year (Fall and Spring)**.



Timeline – Semester 1 Only

Here are some of the **key dates** to remember for your application and academic timeline if you are planning on studying with us for Semester 1 (Autumn/Fall) only.

Students from our Non-EU partners should be aware that while ordinarily, Newcastle University's Fall semester runs over Winter break and into January, we do allow non-EU partner students to return home in December and undertake 'Alternative Assessments' to complete their studies early. There is no requirement to stay or return to Newcastle in January to take exams because we appreciate that many students, will be resuming studies in their home country.



30 April 2025

Semester 1 application deadline

The deadline for submitting your online application if you are planning to study for Semester 1 (Autumn/Fall) only.



9 – 12 September 2025

International Welcome Week

A week of activities, help and support to help international students get settled into Newcastle and meet new people. These dates are provisional and will be confirmed in your acceptance letter.

9 September 2025

Provisional recommended arrival date

We recommend that you arrive on the Tuesday of this week so that you can take part in the International Welcome Week. Please wait until you receive your acceptance and visa (if applicable) before making any travel plans.



15 – 19 September 2025

Freshers' Week

A week full of social events, fairs and administrative tasks to help all new students get settled in, make new friends and get ready to start their classes.



22 September 2025

Semester 1 classes begin

The teaching start date for Semester 1 (Autumn/Fall).

12 December 2025

Semester 1 classes end

The teaching end date for Semester 1 (Autumn/Fall).



Timeline – Semester 2 Only

Here are some of the **key dates** to remember for your application and academic timeline if you are planning on studying with us for Semester 2 (Spring) only.



31 October 2025

Semester 2 application deadline

The deadline for submitting your online application if you are planning to study for Semester 2 (Spring) only.



21 – 23 January 2026

International Welcome

A short week of activities, help, and support to help international students get settled into Newcastle and meet new people. These dates are provisional and will be confirmed in your acceptance letter.

21 January 2026

Provisional recommended arrival date

We recommend that you arrive by the Wednesday of this week so that you can take part in International Welcome. Please wait until you receive your acceptance and visa (if applicable) before making any travel plans.



26 January 2026

Semester 2 classes begin

The teaching start date for Semester 2 (Spring).



20 March 2026

Classes end for Spring Break

Students will have a month for travelling, socialising, relaxing and preparing for any upcoming exams.



20 April 2026

Classes resume after Spring Break

Spring Break ends and classes will continue for the rest of Semester 2.



29 May 2026

Semester 2 classes end

The teaching end date for Semester 2 (Spring).



English Language Requirements

If English is not your native language, you'll need to provide evidence that your level of English means you will be successful in the classroom.

If you are coming for a full year

You'll need to provide an English language certificate equivalent to an overall IELTS score of 6.5, with at least 5.5 in each sub-skill.

If you are a non-EU national coming for one semester on a visitor visa

You'll need to provide evidence that you have English language skills to the equivalent of IELTS score of 6.5. Please see [our website](#) for the list of tests we accept.

For EU nationals coming for one semester on a visitor visa

You'll need to demonstrate that you have a minimum level of B2 (in the [Common European Framework](#)) in English. We will accept either:

- Confirmation from your home university that you meet our language requirements when they nominate you to us
- A statement from a staff member at your university confirming your English is equivalent to at least B2, or stating that your degree is taught/assessed in English
- An English language certificate confirming B2 equivalency or better. This should be stated on the test certificate or published on the test provider's website.

You can find more information on our [English language requirements website](#).

Exceptions

- If you're from one of the countries or territories [listed on the UK government website](#), you do not need to prove your knowledge of English
- If you studied Hong Kong Diploma of Secondary Education (HKDSE) you'll need Grade 5 in English with a minimum of Grade 4 in each element. Valid only if you've taken the test within 3 years of the start of your course with us
- Singapore Integrated Programme: Achievement of conditions of offer. Valid only if you have taken the test within three years of the start of your course with us
- If you're joining from a Japanese partner, we will accept IELTS 6.0 with 5.5 in each sub-skill. In this case you will be required to follow certain courses/modules.
- If you have studied in an English-speaking/teaching institution, recognition of your previous English language education is sufficient as proof of your English level.

English Language Courses

We offer [free English lessons](#) throughout the year – you can attend classes, workshops and interactive lectures to help with your English language skills. You can also take a [pre-sessional English course](#), costing from £3595 for 6 weeks or from £5775 for 10 weeks in the summer before you start your studies.

Visa Regulations

Applying for a Visa

The Global Opportunities team at Newcastle University will issue students with the **necessary documents** required to enter the UK as a student, but it is your **responsibility** to check if you need to apply for a visa before you travel.

If you are coming to Newcastle to study for **one semester only**, you may need to apply for a **Standard Visitor Visa** or an [ETA](#) before you travel to the UK.

Most international students coming to Newcastle to study for **one academic year** will require a **Student Route Visa**. Please visit the [UK government's visa and immigration website](#) to check if you need a visa. You should carefully check what you need and research the **cost, requirements, and timescales**.

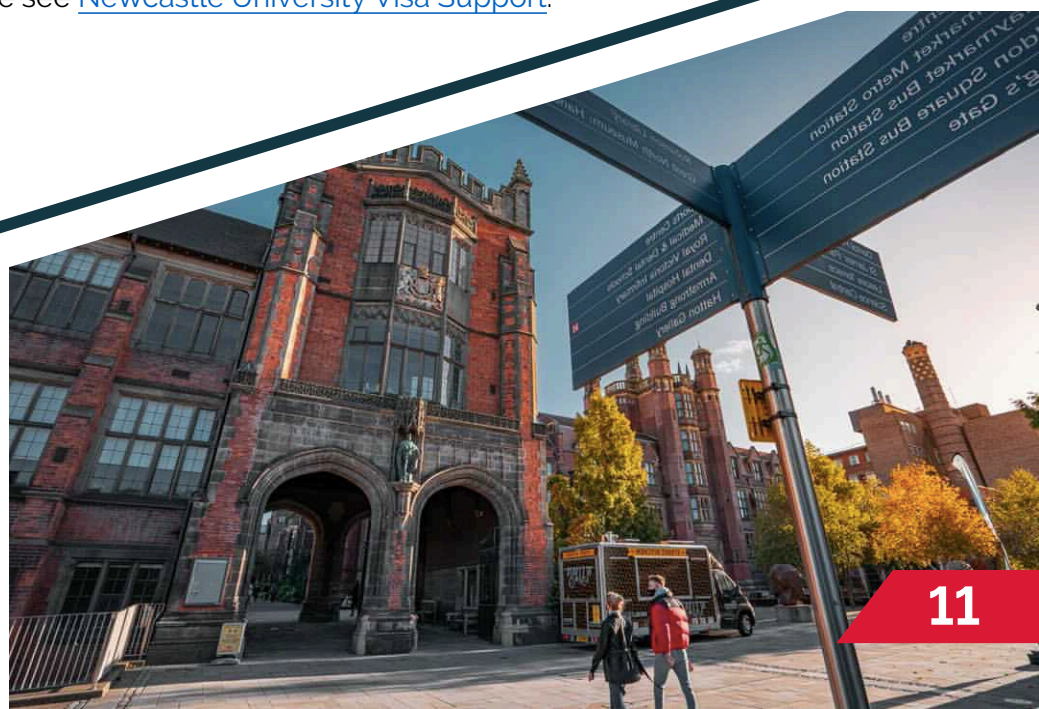
If you are a semester-only student and wish to extend your stay for the next semester, you will need to apply for a **Student Route Visa**. A requirement for this is a valid IELTS score of 6.5 with a score of 5.5 in the subsections. Approval from Newcastle University and your home institution is also needed. You will need to notify Global Opportunities by 31 October 2025.

Immigration advice is available from [UKCISA](#) and [Newcastle University Visa Support](#)

If your application to study with us is successful, the Global Opportunities will send you an **acceptance letter** that you will use to apply for a visa.

Right to Work

You may or may not have the right to work in the UK as a student and this will depend on your **immigration status**. If you need additional guidance on UK immigration, please see [Newcastle University Visa Support](#).



Arrival Dates

For students joining us in September, there are two weeks of **welcome activities** for you to get involved with before classes start. For students joining us in January, there is a single short week of activities before starting class.

We recommend students arrive in Newcastle on the **Tuesday** of the week of **International Welcome** in September and on the **Wednesday** in January:

Semester 1 (Autumn/Fall): Tuesday, 9 September – Friday, 12 September 2025

Semester 2 (Spring): Wednesday, 21 January – Friday, 23 January 2026

We recommend you wait until you have been accepted by Newcastle and have your visa – if relevant – before making any travel arrangements.



International Welcome

Our **International Welcome** programme has been designed to support new international students as they adjust to their new life in Newcastle. International Welcome Week runs in **September for Semester 1 students** and in **January for Semester 2 students**. For those flying into Newcastle Airport during designated times, staff will be there to offer a warm welcome and to provide transport to your accommodation.

During International Welcome Week there will be:

- Talks to help prepare you for your upcoming studies.
- Sessions to introduce you to the local area and surrounding region.
- Opportunities to socialise and meet new students.
- Fun activities and events to keep you busy while you settle in.
- Workshops where you will officially register for modules/classes.

We have a [dedicated website](#) that is updated before the start of each new semester with information for new students.

Arrival to Newcastle

Our nearest airport is **Newcastle International Airport** (15 minutes by car to campus, 20 minutes by Metro to Campus).

Our nearest train station is **Newcastle Central** (5 minutes by car to campus, 5 minutes by Metro to Campus).

If you arrive within the designated times during International Welcome Week, Newcastle University staff will be waiting for you at the **airport arrivals lounge** and will help **transport** you to your accommodation. More information on how to take advantage of this service will be provided to you in the pre-departure period.

If you arrive outside of these times or into the train station or another UK airport, you must organise transportation to your accommodation **independently**. Please try to plan this ahead of your arrival and seek advice from [Global Opportunities](#) if you need it.

Please visit our website for more information about [methods of getting to Newcastle from other UK airports](#).



Accommodation

Accommodation applications are expected to open at the end of April. Once you've accepted your place at Newcastle University, you can apply for student accommodation.

Our student rooms are designed for **single-occupancy**, providing a private space to sleep and study. Some rooms include an ensuite bathroom, while others share a bathroom with typically 4-6 other students. You'll also have access to a shared communal space and kitchen with your new 'flatmates'.

If you're coming for a full year

We guarantee University accommodation to students coming for a full year if you meet the eligibility criteria. Applications will be open from the **end of April to the end of June**, and you'll be able to apply once you have an offer from the university.

If you're coming from one of our non-EU partners for one semester

While part-year exchange students from non-EU partners are not guaranteed accommodation, we encourage you to apply and can **usually** offer you a room. Applications will be open from **the end of April to the end of June**, and you'll be able to apply once you have an offer.

If you're coming from one of our European partners for one semester

While we can't guarantee accommodation to all students, we encourage you to apply and hope to be able to offer you a room. Rooms will be let on a first come, first served basis via our Advanced Booking system. This will be available from **June (date to be confirmed) - 31 July**, or until the rooms sell out, whichever is soonest. To secure a room, you must have an unconditional firm offer to study at Newcastle University.

You can also consider private accommodation. Our Students' Union created this [helpful advice website](#).



Why Newcastle?

A Cultural City

Newcastle offers a **diverse** cultural scene, **architectural** beauty, **history** and a world-famous **nightlife**. The city has excellent **transport** links and **London** is only a 3-hour journey away by train. From the city centre, it is only a short bus or train ride to the **countryside**, where you can explore the area's breath-taking scenery and **coastline**.

Find out more about [Life in Newcastle](#).

A Sporting City

This city is not only home to **Newcastle United Football Club** and St. James' Park, but also the Falcons and Eagles; top-tier **rugby** and **basketball** teams. Newcastle University is also one of the UK's top universities for sport, offering fantastic **facilities** and a range of **athletics clubs**. Find out more about [Sport](#).

A Student City

Newcastle is ranked as one of the **UK's top student cities**, offering a range of **culture** and **entertainment**. The Newcastle University Students' Union (NUSU) is run by students, for students. They provide lots of opportunities to get involved. Find out more about [NUSU](#).

