

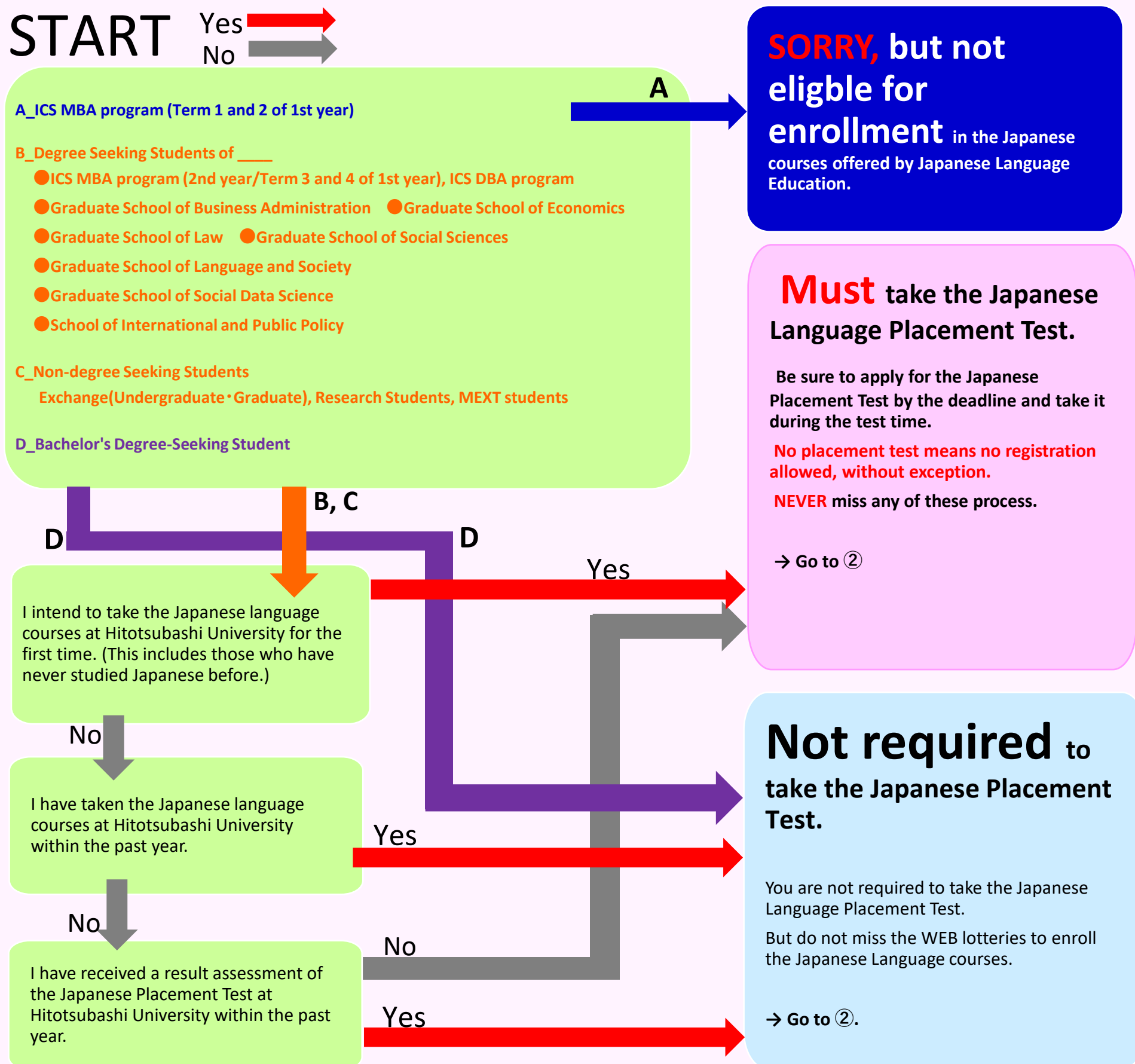


Registration Steps

Please follow the following steps from ① to ③ below to register for the Japanese language courses.

① Review the flowchart.

Review the flowchart below whether you are eligible to take the Japanese language courses offered by Hitotsubashi University Japanese Language Education Program and whether you are required to take the Japanese Language Placement Test.



② Confirm courses eligible for enrollment.

Please confirm which courses you are eligible to take since they vary depending on your student status.

Degree Seeking
Students
(Undergraduate)

Degree Seeking
Students(Graduate)

Non-degree Seeking
Exchange(Undergraduate/Graduate),
Research Students,

Non-degree Seeking
Japanese Studies Students
(MEXT students)

You can take the courses displayed by the buttons above that are at the level of your most recent Japanese placement test result or at the next level after the one you have already mastered.

For degree seeking students at graduate school of social sciences: Please note that you cannot take more than 8 credits of Japanese language courses during your enrollment in a master's or doctoral program in the graduate school.

③ Course registration

You must apply for registration for courses during the WEB lotteries period or register for those courses during the registration term. There are no remedies for those who missed the WEB lotteries or registration.